



ABOUT US

Pennsylvania Conservative Energy Forum

The **Pennsylvania Conservative Energy Forum** (PennCEF) was created by conservatives, for conservatives who want the Commonwealth to adopt an all-of-the-above, diversified energy portfolio that includes an emphasis on moving to clean, renewable energy and energy efficiency technologies. PennCEF believes that all-of-the-above energy policy will help create good-paying local jobs across the state, improve our grid and national security, and conserve our natural resources.

Our Mission

The Pennsylvania Conservative Energy Forum advocates for free market, clean energy solutions by engaging and educating policymakers and consumers to benefit all residents of the Commonwealth.

Our Team

Chad Forcey and John Storey make up the executive team in Pennsylvania. They have a combined 60 years of experience in legislative and policy work. This strong team works to create a positive landscape for renewable energy with policy makers and other state leaders.



CHAD FORCEY

Executive Director
chad.forcey@penncef.org



JOHN STOREY

Harrisburg Director
john.storey@penncef.org

Leadership Council

JIM CAWLEY

Vice President of Institutional Advancement | Temple University
32nd Lieutenant Governor of the Commonwealth of Pennsylvania

MARK DESANTIS

CEO | RoadBotics

JOHN EASOZ

President | Solar PV Consulting

MIKE FEENEY

CEO | Feeney's Wholesale Nursery

RON GDOVIC

President & CEO | WindStax Energy

DAVID JASON

Co-Founder | Green Roads Solar Energy & Iceburgh Associates

ED JOHNSTONBAUGH

Education Program Associate for Energy, Business and Community Vitality | Penn State University, College of Agricultural Sciences

BRIAN KENNEDY

SVP for Operations and Government Affairs | Pittsburgh Technology Council

DAN LAUGHLIN

State Senator | 49th District

JOHN LEHMAN

U.S. Secretary of the Navy, 1981-1987

DILIP LIMAYE

President & CEO | SRC Global, Inc.; Global Energy Consultant

CHUCK MCILHINNEY

Pennsylvania State Senator, 2007-2019

BARRY MOORE

CEO | Moore Energy

JERRY PICKEL

Owner/Operator | Pickel's Wildlife Services

JIM SEIF

Secretary | PA Department of Environmental Protection, 1995 - 2001

TOM STEVENSON

Partner | Green Roads Solar Energy & Iceburgh Associates



CORPORATE SUPPORT

How to support PennCEF's all-of-the-above energy strategy

JOIN US IN MAKING A DIFFERENCE

PennCEF and its corporate partners believe that renewable energy is the key to diversifying Pennsylvania's energy mix, making our grid more reliable, affordable, and sustainable. The PennCEF Leadership Council is comprised of notable, conservative leaders in the federal, state, and private-sector arenas and as an organization we engage the energy and environmental stewardship conversation with a principled, conservative approach. The combination of PennCEF's respected membership and conservative principles gives the organization credibility with conservative audiences and a unique voice in the environmental sustainability community.

With the support of our corporate partners, PennCEF puts that credibility to work to amplify an all-of-the-above energy strategy with action-oriented policies, including Commercial PACE and Community Solar.

In recent years, a growing number of policymakers and other leaders have embraced these efforts, exemplifying the efficacy of PennCEF's message and influence. PennCEF is proud to champion these policies which create jobs, foster economic development, ensure national security and secure farm and land rights.

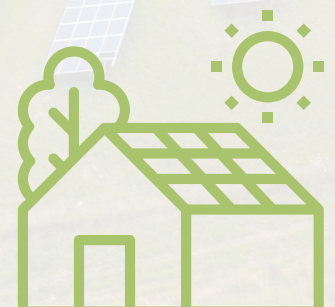
Corporate partners ensure PennCEF's continued delivery of this enduring approach:

- We consistently reach voter constituencies and policymaker audiences other organizations have yet to successfully engage.
- We demonstrate the need for cleaner air, cleaner water, and a reduced carbon energy footprint for our children and grandchildren concurrent with the smart development of Pennsylvania's energy portfolio.
- We represent a different approach, reinforced by qualified leadership and a conservative perspective, which enables us to advance policy initiatives and programs with a greater, tailored impact.

To be successful, any efforts to secure Pennsylvania's energy and environmental sustainability require support and a pro-renewable position on all sides of the political aisle. With the backing of corporate partners, PennCEF provides the critical education, encouragement and engagement needed to build support for a sustainable energy future.

Demonstrate your organization's commitment to the smart development of Pennsylvania's energy portfolio

PennCEF's Corporate Donor program aligns the tax-deductible support from our corporate friends to critical components of the PennCEF mission. Any level of contribution is appreciated—and directly supports the organization's mission.





CORPORATE SUPPORT LEVELS

How to support PennCEF's all-of-the-above energy strategy

Founding Partners | \$10,000

Founding Partners ensure the continuity of PennCEF's mission and long-term commitment to fostering an all-of-the-above approach to Pennsylvania's energy portfolio by providing critical support for operations, communications and event planning. These donors provide the resources needed to maintain the organization's work on behalf of all Pennsylvania energy interests now and into the future.

Founding Level - logo on our website, logo on all virtual and printed materials, recognition in our bi-monthly newsletter, membership in the PennCEF Public Affairs Committee, sponsorship listing for PennCEF's annual board meeting and an opportunity to present to Board members



Sustaining Partners | \$5,000

Sustaining Partners further PennCEF's annual outreach, education and engagement efforts, providing critical operating support and reinforcing a conservative approach to fostering renewable energy in Pennsylvania. These donors provide reliable and strategic support to secure Pennsylvania's energy future—today.

Sustaining Level - logo on our website, recognition in our bi-monthly newsletter, annual co-branded op-ed drafting and placement, membership in the PennCEF Public Affairs Committee

Education Partners | \$2,500

Education Partners support PennCEF's communications and outreach agenda, enabling the organization to develop and disseminate educational messaging about the advantages of diverse energy resources. We seek to consistently provide informational resources on how to best facilitate smart development, to build awareness and support for Pennsylvania's energy transition. These donors support the education and engagement of decision-makers statewide.

Education Level - logo on our website, recognition in our bi-monthly newsletter, annual co-branded op-ed drafting and placement





CORPORATE SUPPORT LEVELS

How to support PennCEF's all-of-the-above energy strategy

Grassroots Partners | \$1,000

Grassroots Partners strengthen our on-the-ground efforts, amplifying PennCEF's outreach through on-site engagements, participation in events, and activities to directly educate state leaders and other stakeholders. Grassroots donors keep PennCEF in the critical conversations moving Pennsylvania energy forward.

Grassroots Level - logo on our website, recognition in our bi-monthly newsletter

Custom Programming Partners

PennCEF is excited to learn about your company's individual priorities and corporate giving goals. Whether your company would like to partner with us for tailored outreach, a regional focus, to highlight a particular issue, or to foster a new program, PennCEF is eager to learn more. Please reach out to Executive Director Chad Forcey to discuss your interests.



All Corporate Partners will be recognized in the PennCEF Newsletter and on our website.

Please know that your generous donations are 100% tax-deductible. Please contact PennCEF to discuss how your partnership can support sustainable energy development of all types across the Commonwealth.



Have Questions?

To learn more about becoming a corporate sponsor, please contact Chad Forcey (717-645-9055; chad.forcey@penncef.org)



CORPORATE SUPPORT FORM

Please complete the form below and return it by email to chad.forcey@penncef.org

OR mail it with enclosed payment to:

Pennsylvania Conservative Energy Forum

2102 Mayfred Lane

Camp Hill, PA 17011

Contributor Details:

Company Name: _____

Address: _____

Phone: _____

Email: _____

Contribution Level:

- | | | |
|---|---|--|
| <input type="checkbox"/> Founding Partner—\$10,000 | <input type="checkbox"/> Education Partner—\$2,500 | <input type="checkbox"/> Custom Contribution _____ |
| <input type="checkbox"/> Sustaining Partner—\$5,000 | <input type="checkbox"/> Grassroots Partner—\$1,000 | |

Contribution Notes:

Payment Details:

- Check (enclosed): Please make checks payable to Pennsylvania Conservative Energy Forum
- Credit Card:

Name: _____

Card Number: _____

Expiration Date: _____ Security Code: _____

Billing Address: _____

Join us in making a difference

PennCEF is designated tax-exempt under section 501(c)3 of the Internal Revenue Code. Your contributions are tax-deductible to the fullest extent of the law.